

SHIGELLA ANTISERA



STATENS
SERUM
INSTITUT

prevents and controls
infectious diseases,
biological threats, and
congenital disorders

- *Serotyping of Shigella*
- *Slide agglutination*
- *Reaction in 5-10 seconds*

FOR IN VITRO DIAGNOSTIC USE



Shigella

Sonnei

Phase I and II

valent O

to use

56445

sh2006

rabbit antiserum

MD

25

25

Statens Serum Institut
SSI Diagnostica
2 Herredsvejen
3400 Hillerød
Denmark

Tel: +45 4829 9178
Fax: +45 4829 9179
microbiology@ssi.dk
www.ssi.dk

Description

The *Shigella* antisera from Statens Serum Institut are intended for serotyping *Shigella* strains.

The polyclonal antisera against *S. dysenteriae*, *S. flexneri* and *S. boydii* are raised in rabbits and consist of O antisera. The antisera against *S. sonnei* are monoclonal antibodies. All antisera are absorbed, ready to use and delivered in 3 mL bottles that should last for typing of 150 strains.

Background

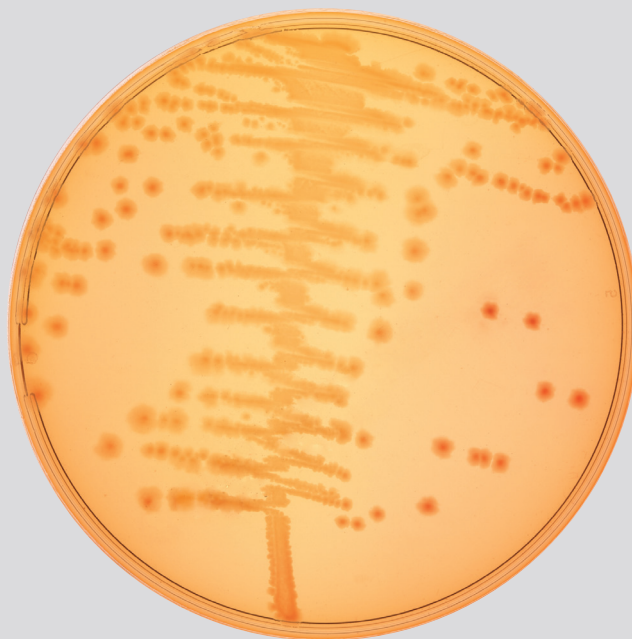
Shigella can cause both bloody diarrhea (dysentery) and nonbloody diarrhea. There exists four species: *S. dysenteriae* (15 serotypes), *S. flexneri* (8 serotypes, with serotype 1 to 5 being subdivided into 10 sub-serotypes), *S. boydii* (19 serotypes) and *S. sonnei* (1 serotype, two phases).

The serologic identification of *Shigella* species is important for both clinical and epidemiologic purposes. *S. flexneri* and *S. boydii* are often biochemically identical so serologic testing is essential.

In the developed world *S. sonnei* and *S. flexneri* are the most prevalent serotypes whereas in the developing world *S. flexneri* and *S. dysenteriae* (especially serotype 1) are most frequent.

Application

The *Shigella* strain is grown over night on a non-selective or selective agar medium. A small amount of bacterial mass is transferred to a slide and mixed with a drop of antiserum. If the bacteria are mixed with a homologous antiserum, the cells are bound together through antigen-antibody bonds to form aggregates (agglutination). The agglutination can be read after the slide has been tilted 5-10 seconds. It is easier to read the result by the naked eye if the slide is held in front of a light source against a black background.



Culture of *S. sonnei*

Storage and shelf life

Store at 2-8°C in a dark place.

Expiry date is printed on the package.

Information and ordering

Statens Serum Institut

SSI Diagnostica

2 Herredsvejen

3400 Hillerød

Denmark

Tel.: +45 4829 9178

Fax: +45 4829 9179

microbiology@ssi.dk

www.ssi.dk

Supplied by:

**Oxford
BioSystems**



Tel: +44(0)1235 431390

sales@oxfordbiosystems.com

www.oxfordbiosystems.com

Available products

Article No.	Product	Type	Packing
66442	<i>S. dysenteriae</i> pool antiserum	(type 1-10)	3 mL
66443	<i>S. flexneri</i> pool antiserum	(type 1-6, group 3,4(y); 6;7,8(x))	3 mL
66444	<i>S. boydii</i> pool antiserum	(type 1-15)	3 mL
66445	<i>S. sonnei</i> pool antiserum	(phase I and II)	3 mL